



CASE STUDY

Sports Arena

PROJECT OVERVIEW

Customer: Fastec Stockholm AB

General Contractor: Fastec Stockholm AB

Performed works: foundations, walls, slabs, elevator pits etc.

Usage: Sports arena

Address: Rektorsvägen 4, 152 40 Södertälje, Sweden

Casted: May–October 2018

Area: 4 000 m² (43 056 ft²)

CUSTOMER

Fastec is Sweden's leading construction specialist in commercial and industrial buildings, as well as sports facilities.

Over the years, the company has constructed a wide range of supermarkets, shopping centres, industrial estates and fuel stations. Fastec has regional offices all around Sweden - Fastec Stockholm AB is one of them, operating in the Stockholm area.

CHALLENGE

Fastec Stockholm AB, a customer and general contractor of the project, had the order to build a multifunctional sports hall at Södertälje Municipality. Despite the tight time schedule, the sports arena's design was made up of complex structures.

The hot summer weather presented an extra challenge for workers on the open construction site.



Joint-less



Perfect for ACI



Low maintenance



Stays flat



40% Less CO₂ emissions



Hygienic

Worldwide:
www.primekss.com
info@primekss.com

US and Canada:
www.primxna.com
info@primxna.com

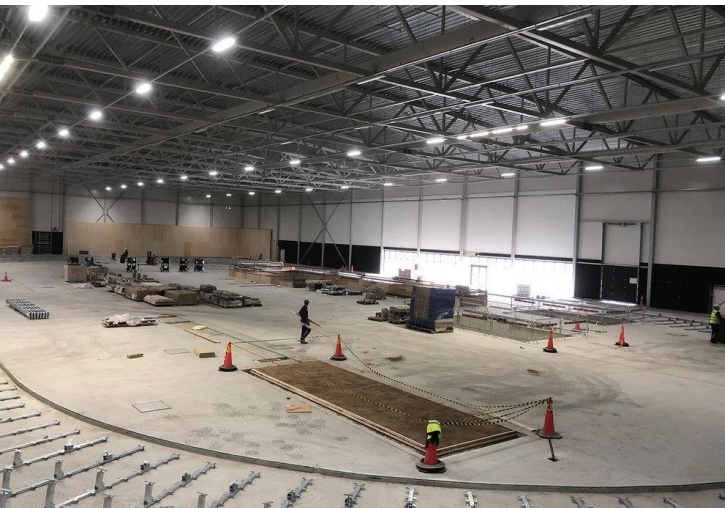


SOLUTION

According to the design there were complicated slopes, deepening for service premises, requiring careful planning of the sequential works. The sports arena incorporated bicycle and running tracks. Primekss built the foundation plate, all foundations, deepenings, load bearing, retaining wall and elevator pit.



In particular, the project works were eased due to the great performance of the ground work contractor. This helped Primekss to complete the project within the planned, tight schedule.



Joint-less



Perfect for ACQ



Low maintenance



Stays flat



40% Less CO₂ emissions



Hygienic

Worldwide:
www.primekss.com
info@primekss.com

US and Canada:
www.primxna.com
info@primxna.com