

**> PROJECT OVERVIEW**

**Customer:** MAXIMA Logistic Centre  
**General Contractor:** Rand & Tuulberg AS  
**Product:** PrīmXComposite floor with special surface finishing, PrīmX Outdoor pavement  
**Usage:** Warehouses, logistic centers  
**Address:** Õllekõogi tee 24, Kurna, Estonia  
**Casted:** July, 2015  
**Area:** 31 167 m<sup>2</sup> (335 478 ft<sup>2</sup>) floor and 16 000 m<sup>2</sup> (172 223 ft<sup>2</sup>) outdoor pavement  
**Slab thickness:** floor 160 (6 ½ in), 180mm (7 in) and 150 mm (6 in) for outdoor pavement  
**CO<sub>2</sub> Savings:** 125 535 kg (276 757 lb)

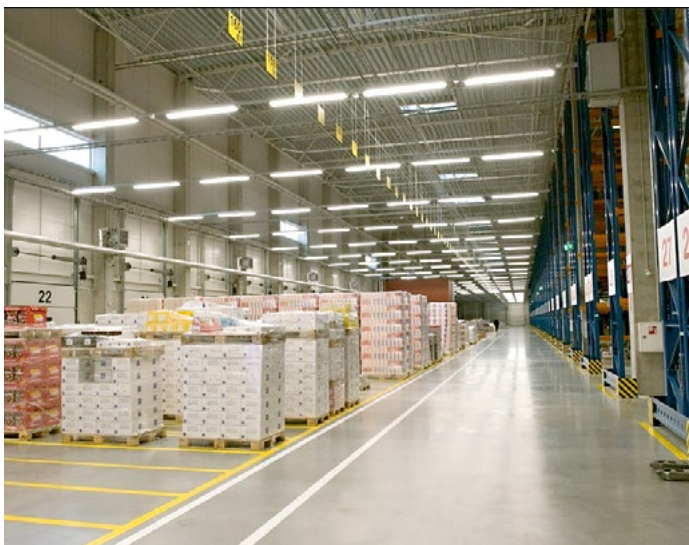
# CASE STUDY

## Logistics



**CUSTOMER**

MAXIMA – the largest retailer in Baltic states, Poland and Bulgaria, operates retail chain with more than 530 shops under brand names MAXIMA, T-MARKET and ALDIK. Company employs more than 30 000 people in Baltic states, Bulgaria and Poland.



**CHALLENGE**

MAXIMA as owner was looking at this project from long time perspective. Maxima operates very high throughput, efficient warehouses. High traffic on the floor means it must be jointfree, flat and extremely durable. No joints means no damage to equipment. No vibrations over joints means that the MHE operators do not suffer from vibration-caused damage to their spines. No joints also means higher loading speeds. Careful and demanding attitude also meant that Maxima technical team was one of the most demanding customers ever. All processes and detailing were looked at, everything agreed in minute detail, resulting in massive, detailed appendix to agreement.

Maxima logistics centers also have outside loading ramps, where **PrīmXComposite** Outdoor pavement technology was used very successfully.

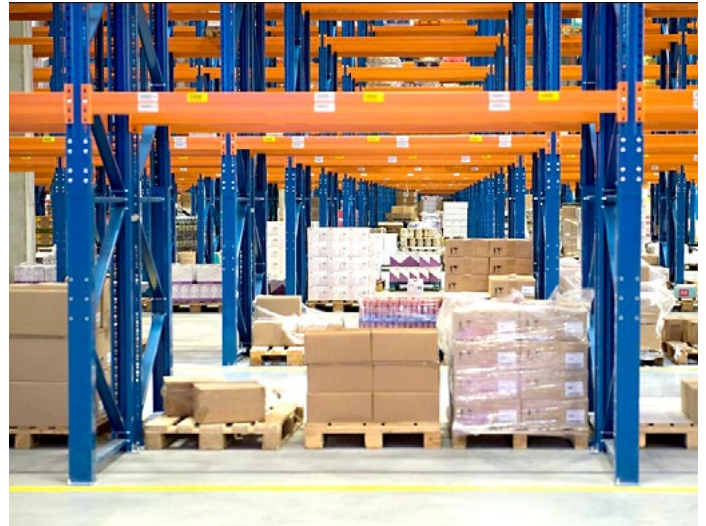
Winters in Estonia can be quite severe with heavy snowing. Snow plowing equipment easily damages joints, therefore **PrīmXComposite** outdoor systems, where the number of joints is minimized, and the joints that we need to technologically place are tight, performs excellently. The plows do not damage the joints and topped with special high wear resistance integral surface, **PrīmXComposite** will serve there for many years with no maintenance costs.

## SOLUTION

For logistic complex floor was selected best flooring solution – **PrīmXComposite** floor. This was best fit as **PrīmXComposite** floor has no joints, floor is flat, and smooth, extra durable and need lowest possible maintenance costs. That means lowest damage to equipment, best productivity, best serviceability and long-term value.

To ensure extra durable surface for the indoor floor special high durability topping - **PrīmX** TOP XD was used.

Unlike other typical exterior pavement systems, such as asphalt pavement, traditional plain concrete pavement, pervious concrete pavement or RCC (Roller-Compacted Concrete) pavement, **PrīmX** Outdoor slabs due to heavy reinforcement with a high number of special high strength spatially distributed steel fibers and special additives is not prone to any weather impact and far more wear resistant.



**50%**  
STRONGER



**30%**  
FASTER  
INSTALLATION



**40%**  
LESS CO<sub>2</sub>  
EMISSIONS

[WWW.PRIMEKSS.COM](http://WWW.PRIMEKSS.COM)

US market: [WWW.PRIMXCOMPOSITENA.COM](http://WWW.PRIMXCOMPOSITENA.COM)