

➤ **PROJECT OVERVIEW**

**Customer:** Lindab AB

**General Contractor:** PEAB AB

**Product:** PrīmXComposite High-Bay floor

**Usage:** Warehouse, logistics

**Address:** Stålhögavägen 117, 269 92 Båstad, Sweden

**Casted:** December, 2016

**Area:** 8 000 m<sup>2</sup> (86 111 ft<sup>2</sup>)

**Slab thickness:** 150 mm (6 in); 200 mm (8 in)

**CO<sub>2</sub> Savings:** 120 990 kg (266 737 lb)

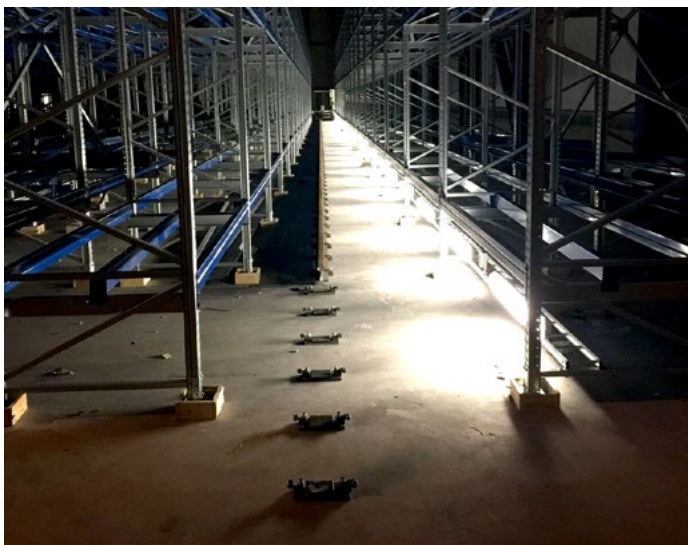
# CASE STUDY

## Logistics



### CUSTOMER

Lindab develops, manufactures, markets and distributes products and system solutions for simplified construction and improved indoor climate. Company works in three areas - Ventilation, Construction and Construction elements. Company has sales in 32 countries with approximately 5,100 employees.



### CHALLENGE

Lindab decided to build a new automated distribution center for Northern Europe with fully robotized warehousing system from Swisslog. Very high loads and high speed of Swisslog automated warehousing system meant that the long-term stability and precision of the floor was very important.

## SOLUTION

PrīmXComposite was best fit for Lindabs new high bay automated warehouse as PrīmXComposite floor has no joints or just very tight working joints. Floor is smooth and flat and stays flat after casting, That means the automated warehouse delivery system can operate without problems.

Floor thickness was set 200 mm (8 in) for high-bay and outloading areas and 150 mm (6 in) for picking area, saving money and time for the project, with excellent result. Both PEAB and Swisslog were very happy of the result.



[WWW.PRIMEKSS.COM](http://WWW.PRIMEKSS.COM)

US market: [WWW.PRIMXCOMPOSITENA.COM](http://WWW.PRIMXCOMPOSITENA.COM)