



# CASE STUDY

## Logistics



### PROJECT OVERVIEW

**Project:** Inex Distribution Centre

**Customer:** SOK Corporation

**General Contractor:** TYL Freeway

**Products:** PrimX high-bay floor

**Usage:** Distribution centre

**Address:** Keukuontie 3, Sipoo, Finland

**Casted:** Nov, 2013 – May, 2016

**Volume:** > 36 000 m<sup>3</sup> (> 1 271 328 ft<sup>3</sup>)

**Area:** > 200 000 m<sup>2</sup> (> 2 152 782 ft<sup>2</sup>)

**Slab thickness:** 130, 220, 250, 100, 80 mm (5, 9, 10, 4, 3 in)

**Automated storage system:** Witron

### CUSTOMER

S Group is a Finnish network of companies operating in the retail and service sectors. It has more than 1,600 outlets in Finland. S Group consists of twenty independent regional and eight local cooperatives and an SOK Corporation, which is owned by the cooperatives and its subsidiaries.

Cooperatives are enterprises that operate in accordance with the principles of cooperative activities. The owners of S Group are called co-op members. S Group retail sales in Y2018 totaled EUR 11.5 billion.

### CHALLENGE

Sipoo logistics complex was designed as a fully automated distribution center, so the whole building – including the floors – was designed to support effective automated systems provided by Witron that could bring much greater operational efficiency.

As robotic solutions are very precise, the demands on concrete floors are extremely high – no movement, high tolerance, and no joints.



Joint-less



Perfect for AGV



Low maintenance



Stays flat



40% Less CO<sub>2</sub> emissions



Hygienic

**Worldwide:**  
[www.primkss.com](http://www.primkss.com)  
[info@primkss.com](mailto:info@primkss.com)

**US and Canada:**  
[www.primxna.com](http://www.primxna.com)  
[info@primxna.com](mailto:info@primxna.com)



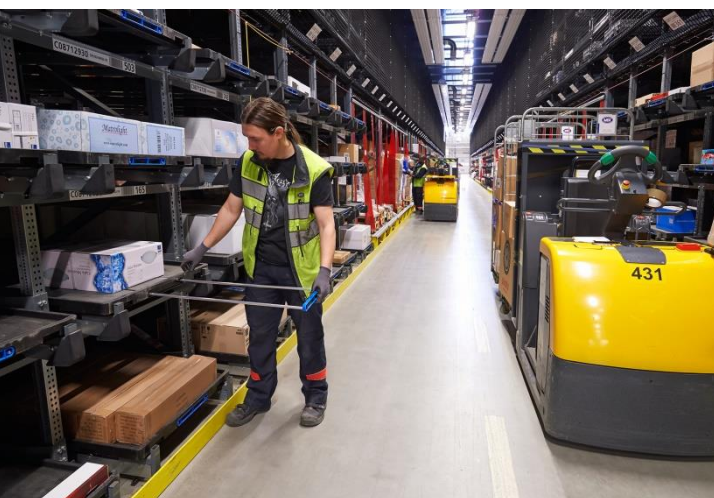
In addition, a radon proofing solution was necessary, and it was also important for the client to have a dust-proof solution that would avoid dust and dirt penetrating surfaces and causing cleaning issues both during and at the end of the construction process.

## SOLUTION

PrīmX Jointless floor was the best-fitting solution for the client's needs. It was a great fit because PrīmX floor has no shrinkage, the floor is stable and flat and stays flat throughout its entire working life. No joints mean faster operations for all MHE: no curled joint edges, no wide-open day joints. So: no joint repairs, no accumulation of dirt to raise hygiene problems, no problematic or costly maintenance work, etc.

The special material properties of PrīmX concrete ensured that the radon proof solution was extremely efficient. It allowed the radon membrane beneath the slab to be eliminated. Because of PrīmX's special materials and zero shrinkage technology, the slab is gas-proof, thus ensuring cost and time-saving benefits.

An anti-dust solution was implemented with special surface treatment immediately after the floor curing had finished.



Joint-less



Perfect for  
AGV



Low  
maintenance



Stays flat



40% Less CO<sub>2</sub>  
emissions



Hygienic

**Worldwide:**  
[www.primexs.com](http://www.primexs.com)  
[info@primexs.com](mailto:info@primexs.com)

**US and Canada:**  
[www.primxna.com](http://www.primxna.com)  
[info@primxna.com](mailto:info@primxna.com)